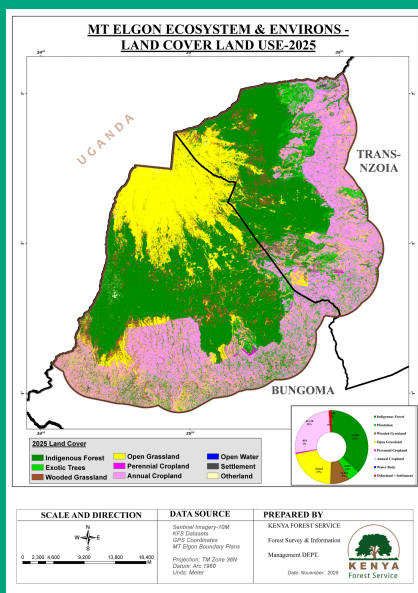


Integrated Landscape Management for conservation and restoration of the Mt. Elgon Ecosystem in Western Kenya

GEF FOLUR – KENYA COFFEE LANDSCAPE INVESTMENT CARD

KEY STATS

- **Timeline:** June 2022 – May 2027
- **Project Size:** \$5,354,587 (GEF Grant)
- **Total Co-financing:** USD \$46,506,320
- **GEF Implementing Agency:** Food and Agriculture Organization (FAO)
- **Core Executing Partner¹:** Kenya Forest Service (KFS), Kenya Agricultural and Livestock Research Organization (KALRO), County Governments of Bungoma and Trans Nzoia, Community Forest Associations (CFAs)



RELEVANCE & CHALLENGES

Kenya is the 4th largest coffee producer in Africa and 16th globally. Coffee-growing areas span the Western, Rift Valley, Central Kenya, and Mt. Kenya regions. Despite its reputation for high-quality coffee, the sector faces significant challenges, including low productivity, declining soil fertility, an aging farming population, climate change impacts, limited investment in research and extension services, and low adoption of Good Agricultural Practices (GAPs). These factors contribute to reduced earnings and limited investment due to low incomes.

OVERVIEW & EXPECTED IMPACTS

The FOLUR Kenya country project aims to transform coffee and staple food production systems in the Mt. Elgon landscape (covering Bungoma and Trans Nzoia counties) through integrated landscape management (ILM). The project will promote sustainable coffee and maize production, restore degraded ecosystems, and enhance biodiversity and climate resilience. It will empower local communities, particularly women and youth, through improved agricultural practices, inclusive governance, and access to sustainable value chains.

The following main activities are being carried out by the country project and reinforced by private sector investment:

- **Multi-stakeholder Governance:** The project will strengthen multi-stakeholder platforms to support inclusive planning, coordination, and implementation. These platforms will engage local governments, farmer cooperatives, private sector actors, and civil society organizations to align landscape goals with national development priorities. The Kenya Coffee Platform (KCP), County Integrated Development Plans (CIDPs), and the National Coffee Revitalization Programme will serve as key mechanisms for stakeholder engagement and capacity building.
- **Landscape Approach:** ILM will be utilized throughout the program to ensure sustainable management of the Mt. Elgon ecosystem. ILM will facilitate multi-stakeholder engagement, planning and coordination, capacity building, policy development, and monitoring and evaluation. A baseline assessment will be conducted to inform site-specific action plans, developed through participatory processes involving local governments and community stakeholders. These plans will guide restoration, sustainable agriculture, and biodiversity conservation efforts across the landscape.

¹ Kenya Agricultural and Livestock Research Organization, Kahawa Bora / Sustainability Ltd, Mount Elgon Elephant Project, International Coffee Foundation, KENKAFFE Export, African Coffee Roasters



Food and Agriculture Organization of the United Nations

By 2027, the project will transform coffee and staple food production systems through integrated landscape management with the vision to conserve and restore the Mt. Elgon ecosystem.

Integrated Landscape Management for conservation and restoration of the Mt. Elgon Ecosystem in Western Kenya

GEF FOLUR - KENYA COFFEE LANDSCAPE INVESTMENT CARD

Kenya's FOLUR country project expected impacts align with the sector-wide vision and goals for a sustainable coffee sector as set out by the [Sustainable Coffee Challenge](#).

PROSPERITY & WELL-BEING



43,000 farmers (at least 30% women) benefited from training and access to services

40 entrepreneurs/ community groups (50% women, youth, Ogiek community) supported through small grants to develop Nature-based enterprise

RESILIENT SUPPLY



50,000 ha under sustainable practices

At least **1,000 hectares** of coffee farms in the process of certification

STRENGTHEN DEMAND



10 contractual arrangements between cooperatives and buyers established to ensure market access at profitable prices

CONSERVE NATURE



10,000 ha of degraded landscapes under restoration (7,000 hectares of forests, 3,000 hectares agriculture)

8,201,468 metric tons of CO2e mitigated

CO-INVESTMENT OPPORTUNITIES



Kenya's Mt. Elgon landscape offers opportunities for private sector co-investment to enhance supply chain resilience, support nature-positive production, and strengthen local value chains. Concrete opportunity areas for coffee supply chain actors – small, medium, and large – to complement and scale the program include:

DEFORESTATION-FREE COMPLIANCE

Support coffee cooperatives in meeting the EU Deforestation Regulation (EUDR) by investing in targeted technical assistance and capacity building. Help develop traceability systems and polygon mapping tools and strengthen data collection and verification processes to ensure deforestation-free sourcing across the supply chain.

RESTORATION & AGROFORESTRY

Scale up restoration efforts by expanding community tree nurseries at Kaberwa and Kiptogot forest stations. Invest in nursery infrastructure and seedling distribution, support agroforestry systems that integrate coffee with native species, and fund restoration activities that enhance carbon sequestration, biodiversity conservation, and climate resilience.

PARTICIPATORY LANDSCAPE PLANNING

Engage in inclusive landscape governance through the Participatory Informed Landscape Approach (PILA) and the Mt. Elgon Ecosystem Management Plan, covering 178,000 hectares. Invest in stakeholder engagement platforms at sub-county and county levels, co-develop landscape action plans with local governments and communities, and support tools such as geospatial mapping, behavioral change assessments, and stakeholder analysis to inform planning and decision-making.

EXPLORING OPPORTUNITIES FOR PAYMENT OF ECOSYSTEMS SERVICES (PES)

Opportunities for Payments for Ecosystem Services (PES) in Mount Elgon include carbon sequestration, water quality regulation, biodiversity conservation, and sustainable timber and non-wood forest products. It is envisaged that the payments generated through the PES scheme could provide a sustainable source of finance for the conservation of the natural ecosystem and indigenous forests present in the Mount Elgon Water Tower.

Additionally, interested stakeholders will be invited and encouraged to participate in subnational multi-stakeholder initiatives or roundtables and to provide in-kind contributions.

This publication was produced by Conservation International with the support of:



GET INVOLVED: To indicate interest in supporting this country program, please contact: James Mwang'ombe (mwangombejames@yahoo.co.uk) at Kenya Forest Service (KFS) and Philip Kisoyan (Philip.Kisoyan@fao.org).



Visit <https://www.folur.org/kenya> to learn more, including about additional coffee-focused FOLUR country projects.



THE WORLD BANK

