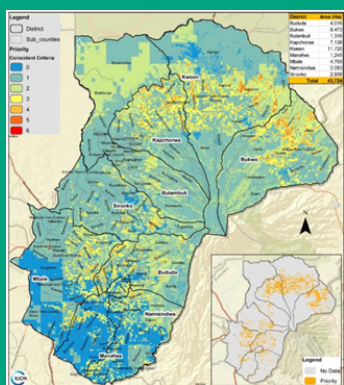


Uganda - Promoting integrated landscape management approach for conservation of the Mount Elgon ecosystem in Eastern Uganda

GEF FOLUR - UGANDA COFFEE LANDSCAPE INVESTMENT CARD

KEY STATS

- **Timeline:** November 2022 –December 2027
- **Project Size:** USD \$9,433,027
- **GEF Implementing Agency:** United Nations Environment Programme (UNEP)
- **Core Executing Partner:** National Environment Management Authority (NEMA)
- **Involved Partners:** Ministry of Agriculture, Animal Industry and Fisheries (MAAIF), Ministry of Water and Environment (MWE); International Union for the Conservation of Nature (IUCN); World Agroforestry Centre (ICRAF), and others¹.



¹ Additional involved partners include: Kalaa Mugosi Women Empowerment Ltd; Mt. Elgon Agroforestry Communities Coop Enterprise Ltd; Bushika Integrated Area Cooperative Enterprise Ltd; Bugisu Cooperative Union; Sebei Elgon Cooperative Union; Uganda Wildlife Authority; National Forestry Authority; District Local Governments of Bududa, Bukwo, Bulambuli, Kapchorwa, Kween, Manafwa, Mbale, Namisindwa and Sironko.

RELEVANCE & CHALLENGES

Uganda's coffee sector is a cornerstone of its economy, supporting over 3.5 million families and contributing significantly to foreign exchange earnings. The country is known for its high-quality Arabica and Robusta coffee. In terms of volumes for Arabica, Uganda is the second largest African producer and eighth globally. Coffee marketing is guided by the Coffee Production Department of the Ministry of Agriculture, Animal Industry and Fisheries (MAAIF) under the National Coffee (amendment) act of 2025, with certification under the East African Standard on Roast and Ground Coffee. Uganda's government recognizes the importance of coffee in national economic transformation and poverty reduction and has prioritized strategies to improve production and productivity, processing, marketing, and farmer participation. These include gender-responsive value chains, value addition equipment, enhanced market information systems, and capacity building for smallholders.

OVERVIEW & EXPECTED IMPACTS

The FOLUR country project in Uganda aims to transition the Mt. Elgon region to a sustainable, biodiverse, climate-resilient, integrated landscape with efficient coffee and staple crops (maize, banana, and Irish potato) value and supply chains. By 2027, increase the sustainable production of coffee and staple crops (maize 15%, banana 15%, beans 15%, and Irish potato 15%; Source MAAIF Stat, 2025) in the Mt. Elgon region by 35% while enhancing biodiversity and climate resilience through the implementation of integrated landscape management systems and sustainable farming practices, ultimately benefiting at least 10,000 farmers.

The following main activities are being carried out by the country project and reinforced by private sector investment:

- **Landscape Approach:** The project is guided by Integrated Landscape Management (ILM) to address land degradation and climate vulnerability. A landscape-wide study was conducted to assess land use and climate risks, informing the development of a participatory ILM plan. This plan includes site-specific community environment and climate action plans, developed with local government and stakeholder input to ensure ownership and smooth implementation. ILM activities include promoting sustainable agriculture, restoring habitats, improving biodiversity, and strengthening stakeholder coalitions to lead and govern landscape initiatives.
- **Multi-stakeholder engagement:** The program will strengthen coordination mechanisms to support resource mobilization, knowledge management, and participatory monitoring and evaluation. Stakeholders will engage in joint reviews, benchmarking activities, and capacity-building networks. Monthly coordination calls and in-kind contributions will support implementation and learning.

Uganda - Promoting integrated landscape management approach for conservation of the Mount Elgon ecosystem in Eastern Uganda

GEF FOLUR - UGANDA COFFEE LANDSCAPE INVESTMENT CARD

Uganda's FOLUR country project expected impacts align with the sector-wide vision and goals for a sustainable coffee sector as set out by the [Sustainable Coffee Challenge](#).

PROSPERITY & WELL-BEING



384,039 beneficiaries applying sustainable coffee standards (along the coffee value chain)

Minimum **90 local government** leaders from the Mt. Elgon landscape efficiently and effectively managing natural resources in the landscape

RESILIENT SUPPLY



510,000 ha under climate-smart agriculture practices

STRENGTHEN DEMAND



Market information system linking farmers and farmer organizations to markets

CONSERVE NATURE



20,000 ha of degraded forests and restored and benefitting biodiversity

35,000 ha of degraded land, unstable slopes and hilltops in restored

10,834,692 MT of CO₂e mitigated

GET INVOLVED: To indicate interest in supporting this country program, please contact Jane Nimpamya at UNEP: jane.nimpamya@un.org.



Visit <https://www.folur.org/uganda> to learn more, including about additional coffee-focused FOLUR country projects.

CO-INVESTMENT OPPORTUNITIES



Active involvement and co-investment by the private sector will be critical to deliver on the program's targets and to ensure its long-term sustainability. Concrete opportunity areas for coffee supply chain actors – small, medium, and large – to complement and scale the program include:

SUSTAINABLE PRODUCTION

Invest in comprehensive training on sustainable practices, quality inputs, soil fertility improvement, post-harvest handling and advanced tools to enhance yields and product quality for smallholder farmers. Facilitate the adoption of recommended good agronomic practices in coffee production and marketing standards, supply certified seeds and planting materials, and provide value addition equipment. These initiatives aim to increase productivity, support the integration into inclusive value chains, and elevate farmers' incomes.

ECOSYSTEM PROTECTION & CLIMATE RESILIENCE

Support the protection and restoration of natural ecosystems through agroforestry, reforestation, climate-smart farming and income diversity strategies. Investments can unlock carbon finance, eco-tourism, and other payment for ecosystem services (PES), while contributing to biodiversity conservation and climate adaptation.

MARKET ENGAGEMENT & MULTI-STAKEHOLDER PLATFORMS

Engage in national and subnational platforms to align sourcing strategies with landscape goals. Support certification and traceability initiatives, collaborate on marketing of coffee and staple crops, contribute to policy development and quality standards, and participate in joint monitoring, evaluation, and learning. These platforms also support EU Deforestation Regulation (EUDR) compliance and knowledge exchange.

Additionally, interested stakeholders will be invited and encouraged to participate in subnational multi-stakeholder initiatives or roundtables and to provide in-kind contributions.

This publication was produced by Conservation International with the support of:

